



Erasmus+

ȘCOALA GIMNAZIALĂ „MIRON CRISTEA”  
TOPLIȚA, HARGHITA, ROMÂNIA



***ENTREPRENEURIAL SKILLS AND  
COMPETENCES***

***ESPIRITS***

***Nb. 2020-1-FR01-KA229-080542\_2***

**Topic of the meeting:**

***ENTREPRENEURIAL SKILLS AND  
COMPETENCES***



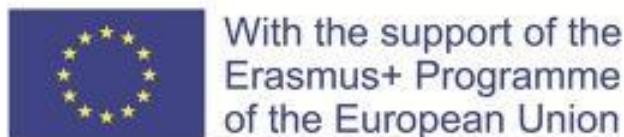
With the support of the  
Erasmus+ Programme  
of the European Union



## PARTNER SCHOOLS

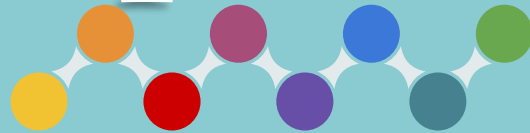


1. LYCEE DES METIERS VUE BELLE – FRANCE (Reunion)
2. Institut de Viladecans –SPAIN (Barcelona)
3. Kemalpaşa Ferizent Bulum Anadolu Lisesi – TURKEY (IZMIR)
4. Școala Gimnazială „Miron Cristea” – ROMANIA (Toplița)



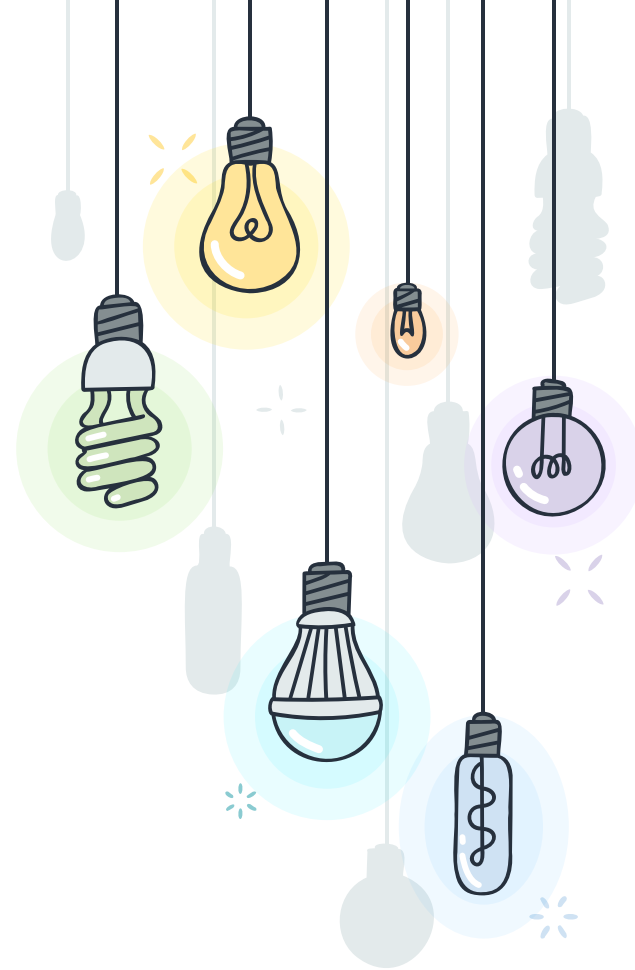
The background features several lightbulbs of various shapes and colors (yellow, purple, green, blue) hanging from thin black cords. Some bulbs are glowing with a soft light, while others are just silhouettes. There are also small white starburst icons scattered throughout the scene.

# Cooperation



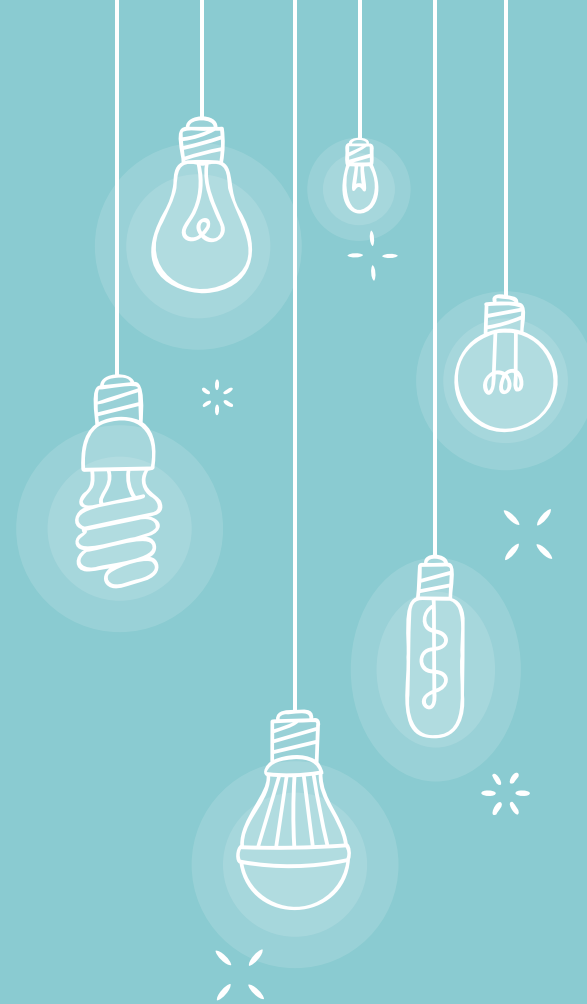
# \* What is cooperation?

What is co-operation? Cooperation means working together to achieve a common goal. Cooperation is practised by people, organisations and countries.



# Cooperation/Teamwork

Cooperation in a business means teamwork. A team is a group of people with different experiences but are usually linked by what they do. We are stronger as a group than an individual. This concept is seen within the greater framework of a team in business.

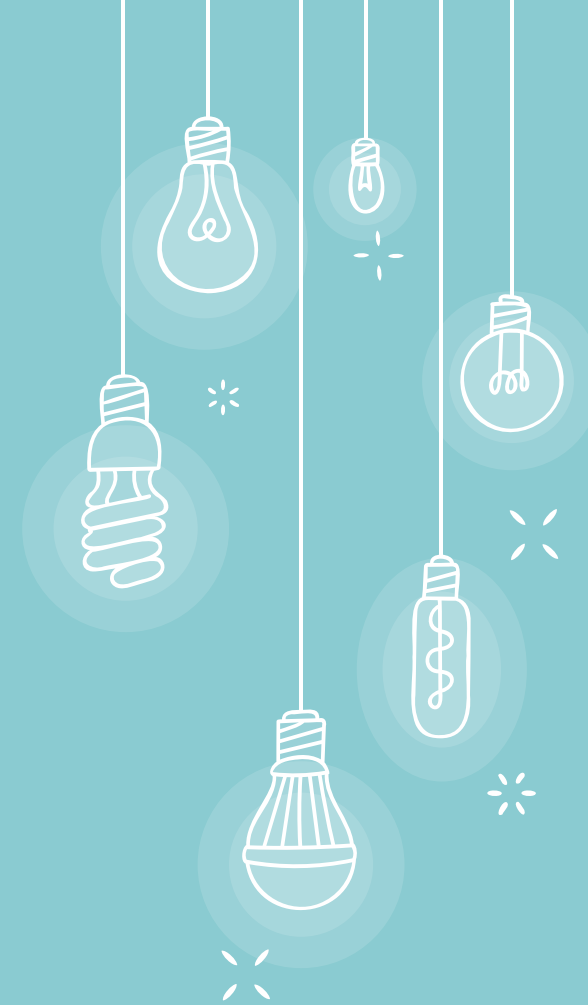


# Why is cooperation so important?

- + Cooperative situations help create that atmosphere, because participants give encouragement and support of one another. Cooperativeness has been linked to **greater learning, emotional maturity and strong personal identity.**



Cooperation can make the difference between success and failure for many businesses. When employees dedicate more time to their duties in a cooperative workplace, they are more productive and things get done more quickly and efficiently.



# Roadmap to great cooperation

Good  
communication



Empathy



Time together



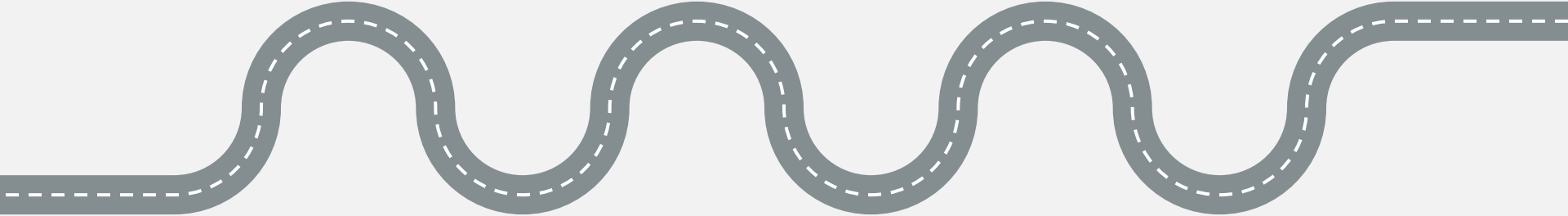
Politeness



Emotional  
maturity

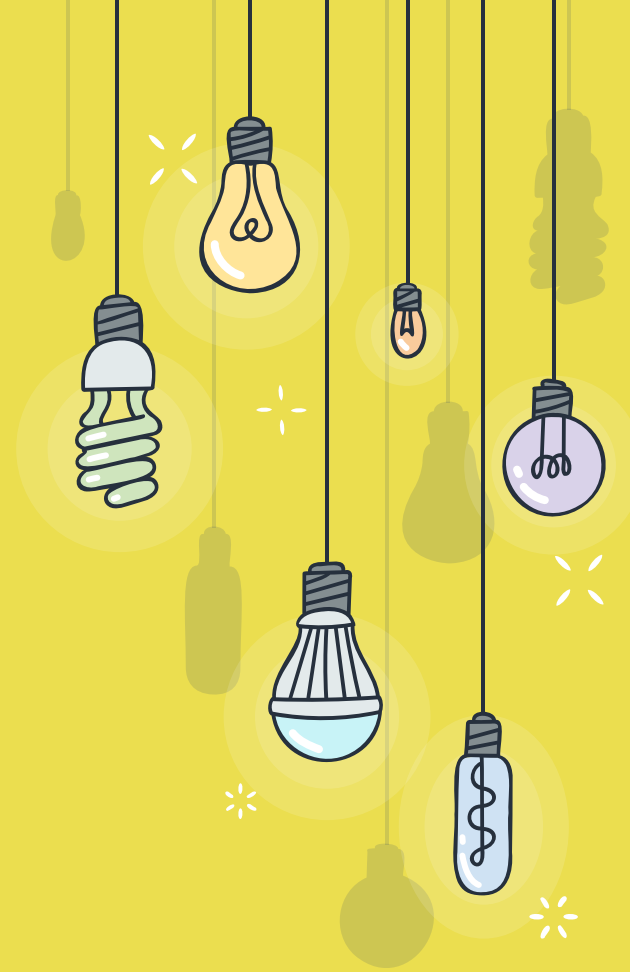


Support

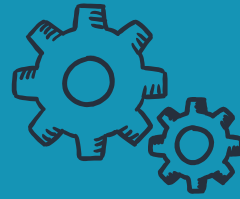




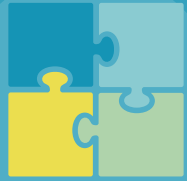
**“ It is literally true that  
you can succeed best  
and quickest by  
helping others to  
succeed.**



# Better together



Collaborative problem solving leads to better outcomes. People are more likely to take calculated risks that lead to innovation if they have the support of a team behind them.



# Emotional part



Working in a team **encourages personal growth, increases job satisfaction, and reduces stress.**

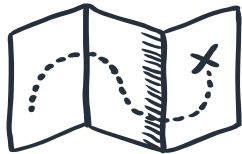
Team members can provide **emotional support** to each other because they often understand the demands and **stress.**



# International cooperation



**No country can tackle the world's challenges alone:** wars and conflicts, climate change, poverty, lack of equality, lack of respect for human rights – unfortunately the list is long. But here we are, helping each other!





**Remember: even the planets  
cooperate to make the universe work  
and glow.**

# Thank you for your attention!

Clonoschi Alexia  
Șipoș Alexandra  
Vâlcan Miruna  
Platon Andrei  
Voșloban Alin

